

Toronto Drop-In Network members

Winter 2019/20 & Winter 2020/21

Date produced: February 5, 2021

Learn more about this project:

[Changes in informal access to selected indoor public spaces in Toronto](#)

What these maps capture

All members of the Toronto Drop-In Network (TDIN) offering access to indoor space in the winter of 2019/20 and 2020/21.

TDIN is an “active coalition of over 50 drop-in centres throughout the City of Toronto that work with people who are homeless, marginally housed, or socially isolated.” TDIN membership includes non-profit agencies and faith-based organizations. Drop-in spaces often include access to washrooms, showers and meals, in addition to community programs.

The 2020/21 map only illustrates drop-ins that are offering indoor access. It does not capture the many drop-ins that are serving take-out meals during COVID and supporting people in various outreach capacities.

Both maps only illustrate TDIN members. This map does not include drop-ins that are not associated with TDIN such as youth spaces in libraries and community centres, drop-in programs offered by community health centres, and other drop-in programming by non-profits and others city-wide.

[How to read the maps](#)

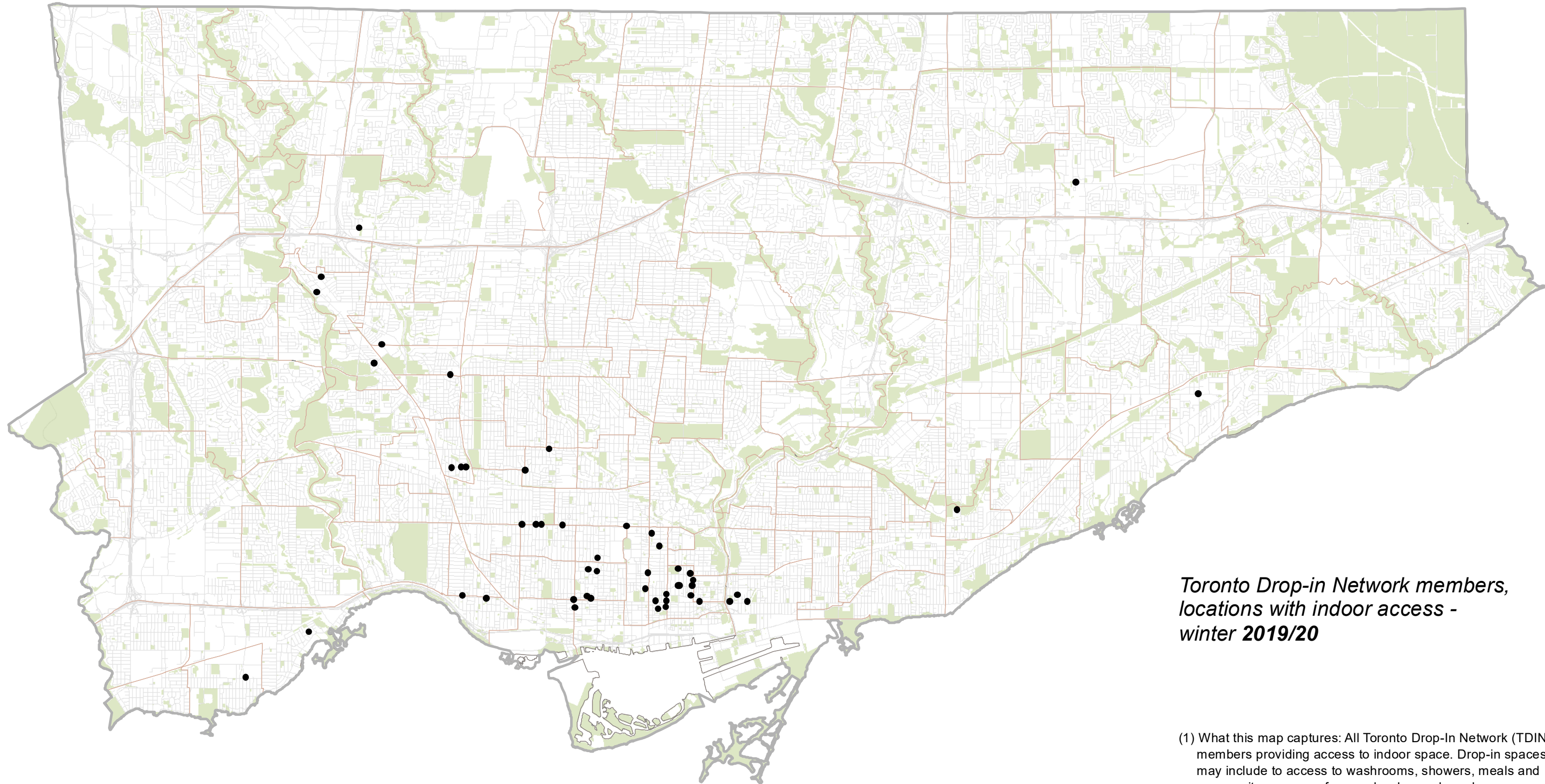
Quick information

- In February 2021, the number of drop-ins offering access to indoor space has dropped by approximately 60 per cent, from 51 to 19.
- Drop-in hours vary. Some are open a few hours once a week, while others are open weekdays, and still others are open 24 hours a day, seven days a week. Of the drop-ins that have remained open, many have reduced hours and some now require appointments.

- In 2019, four drop-ins were 24/7 spaces. Currently, two drop-in are 24/7 spaces, although these are operating with access limitations—one is only accessible to existing clients, and the other is only accessible to existing clients or through the City’s Central Intake line.

Data sources for these maps

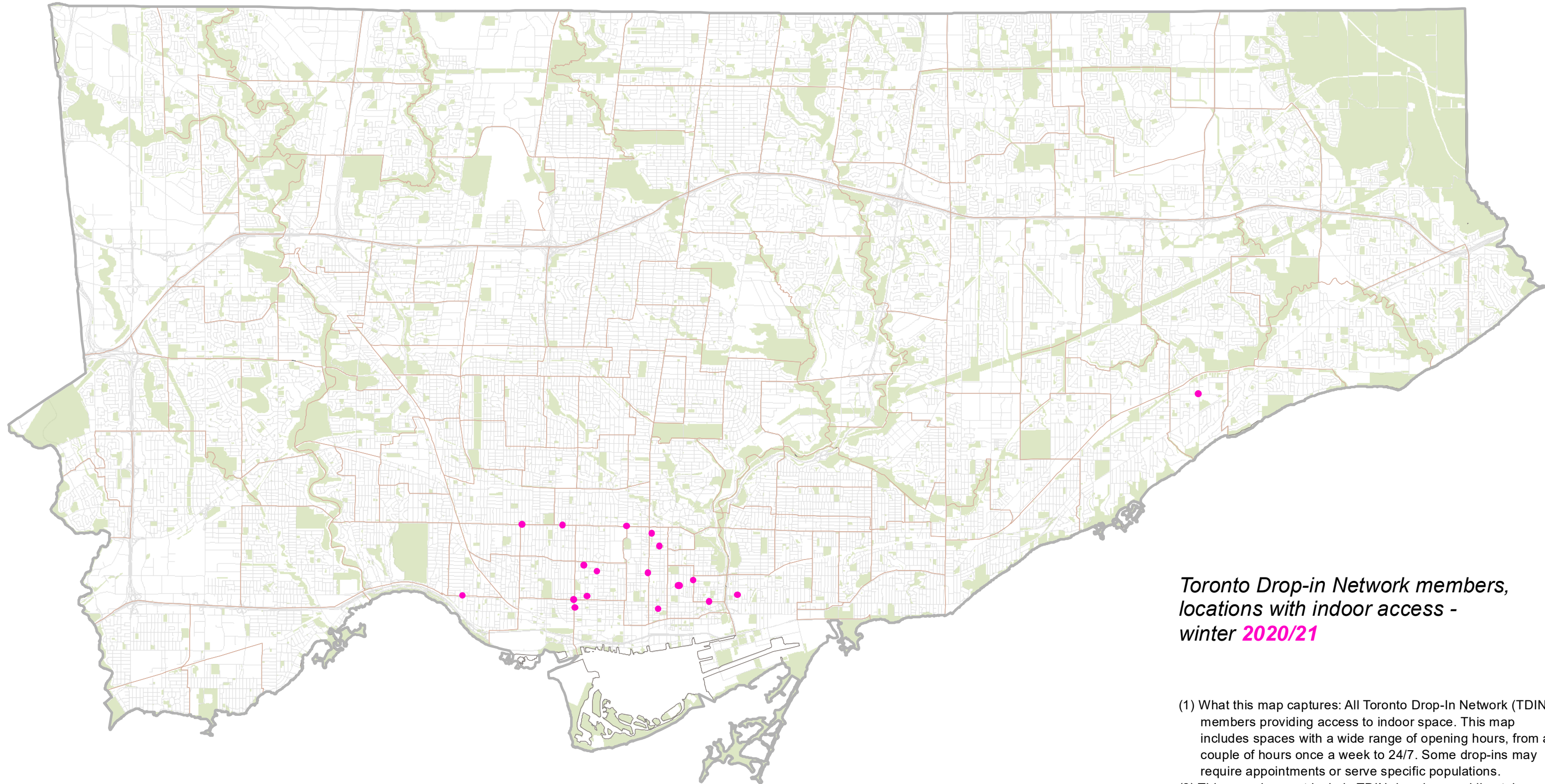
- 2019/20 schedule for drop-ins from TDIN website:
https://tdin.ca/res_documents/2019%20Spring%20.pdf
- 2021 schedule, updated regularly by TDIN:
https://docs.google.com/spreadsheets/d/15rKZjf5AEHNk69297LFI_7ZMp9lyzzOyFKfvVdez_Yw/e/dit#gid=0



Toronto Drop-in Network members, locations with indoor access - winter 2019/20

All locations: 51

- (1) What this map captures: All Toronto Drop-In Network (TDIN) members providing access to indoor space. Drop-in spaces may include to access to washrooms, showers, meals and community programs for people who are homeless or marginally housed. This map includes spaces with a wide range of opening hours, from a couple of hours once a week to 24/7. Some drop-ins may require appointments or serve specific populations.
- (2) This map does not include drop-ins that are not associated with TDIN such as youth spaces in libraries and community centres, drop-in programs offered by community health centres, and other drop-in programming by non-profits and others city-wide.
- (3) Data is from the TDIN Toronto Drop-In Services, Spring 2019 resource. For details please see fact sheet.



Toronto Drop-in Network members, locations with indoor access - winter 2020/21

All locations: 19

- (1) What this map captures: All Toronto Drop-In Network (TDIN) members providing access to indoor space. This map includes spaces with a wide range of opening hours, from a couple of hours once a week to 24/7. Some drop-ins may require appointments or serve specific populations.
- (2) This map does not include TDIN drop-ins providing take-out meals or outreach services without indoor access.
- (3) This map does not include drop-ins that are not associated with TDIN such as youth spaces in libraries and community centres, drop-in programs offered by community health centres, and other drop-in programming by non-profits and others city-wide.
- (4) Data snapshot captured Feb 1, 2021. For data source, please see fact sheet.
- (5) This map is not intended as a resource and will not be updated. Please verify locations, hours, and availability of spaces as the service situation changes quickly.

- Locations
-  Street Grid
-  Neighbourhood Boundaries
-  Green Space